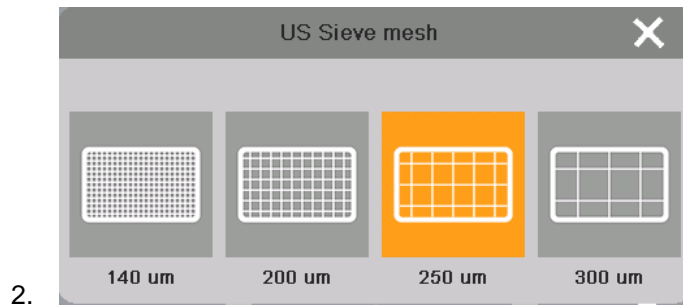

Operating instructions and spare parts list

OptiCenter OC02

Powder management center



Translation of the original operating instructions



2.

The selected mesh size remains active until the system is switched on again.

Manual coating



NOTE:

This coating mode is deactivated by default but can be activated as needed.

- ▶ Parameter no. 40 set to 1 (for more on this, see Chapter "Parameterization")



1.

2.

Spare parts list

Ordering spare parts

When ordering spare parts for powder coating equipment, please indicate the following specifications:

- Type and serial number of your powder coating equipment
- Order number, quantity and description of each spare part

Example:

- **Type** OptiCenter OC02
Serial number 1234 5678
- **Order no.** 203 386, 1 piece, Clamp – Ø 18/15 mm

When ordering cable or hose material, the required length must also be given. The spare part numbers of this bulk stock is always marked with an *.

Wearing parts are always marked with a #.

All dimensions of plastic hoses are specified with the external and internal diameter:

Example:

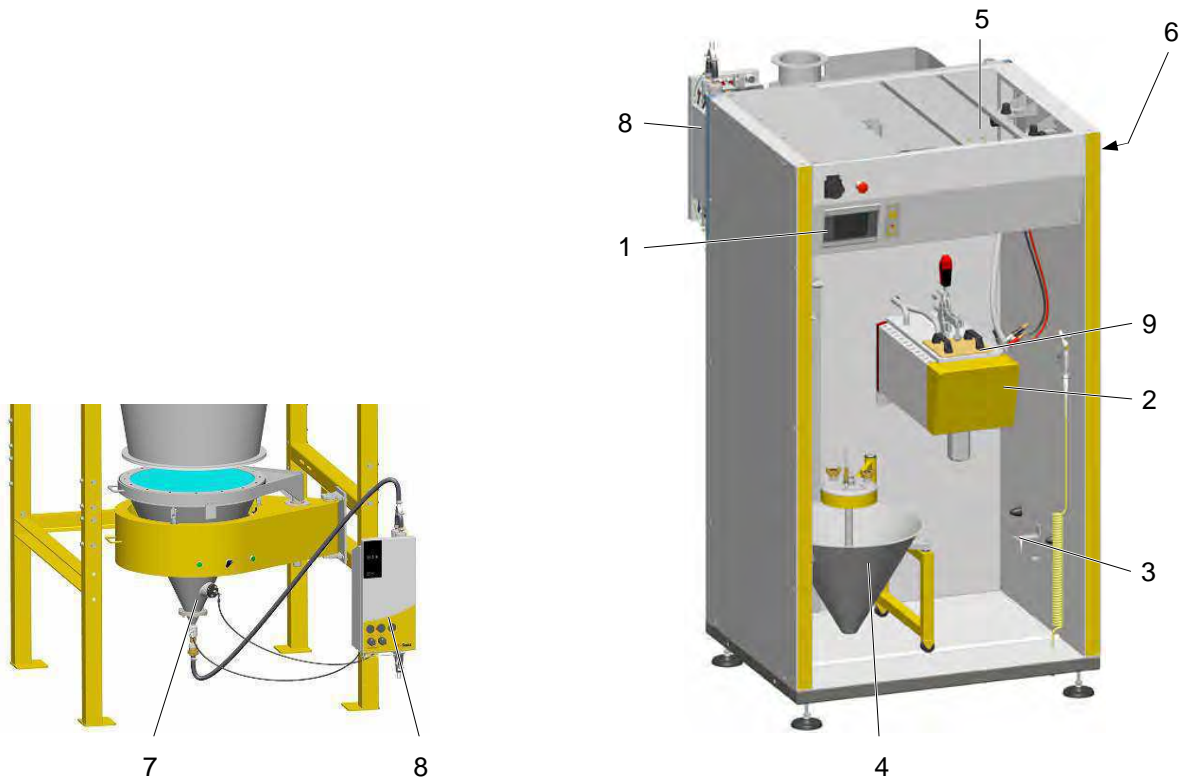
Ø 8/6 mm, 8 mm outside diameter (o/d) / 6 mm inside diameter (i/d)



WARNING!

Only original Gema spare parts should be used, because the explosion protection will also be preserved that way. The use of spare parts from other manufacturers will invalidate the Gema guarantee conditions!

OptiCenter



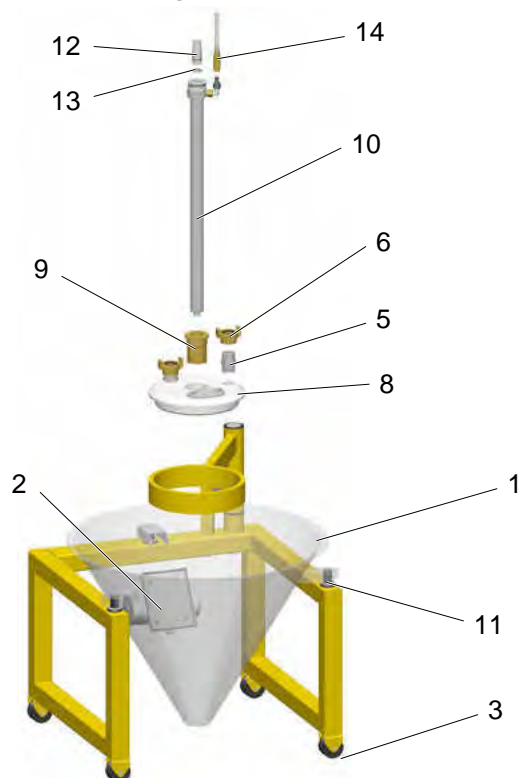
1	Touch Panel – 5.7" complete (see enclosed wiring diagram)	1008 968
	SD card – for pos. 1 (not shown)	1009 230
2	OptiSpeeder – see corresponding spare parts list	
3	Proximity switch	1007 912
4	Powder supply – see corresponding spare parts list	
5	Roof – see corresponding spare parts list	
6	Pneumatics – see corresponding spare parts list	
7	Powder transport – see corresponding spare parts list	
8	OptiFeed PP06 Powder pump – see corresponding operating manual	
9	US06 Ultrasonic sieve – see corresponding spare parts list	



NOTE:

For all other electric components, see also the Spare parts list in the enclosed wiring diagram!

OptiCenter – Powder supply

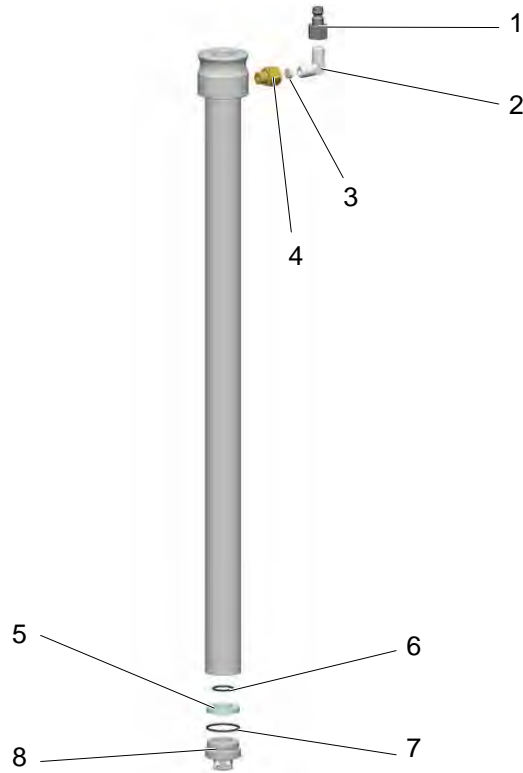


1	Cone	1006 190
2	Vibrator – 220-240 V	1009 251
3	Roller set – 4 rollers + 4 screws	720 001
5	Double nipple – 3/4"-3/4"	228 028
6	GEKA coupling – 3/4"-IG	1002 551
8	Cover	1007 177
9	Cover bushing	1005 245
10	Fluidizing/suction unit – Ø 28 mm, complete	1005 332
11	Rubber damper set – Ø 20x25 mm, M6/21 mm (3 pieces)	720 000
12	Hose connection – complete, incl. pos. 13	1007 658
13	O-ring – Ø 16x2 mm	1007 794#
14	Quick release connection – NW5-Ø 6 mm	200 840

Wearing part

* Please indicate length

Fluidizing/suction unit

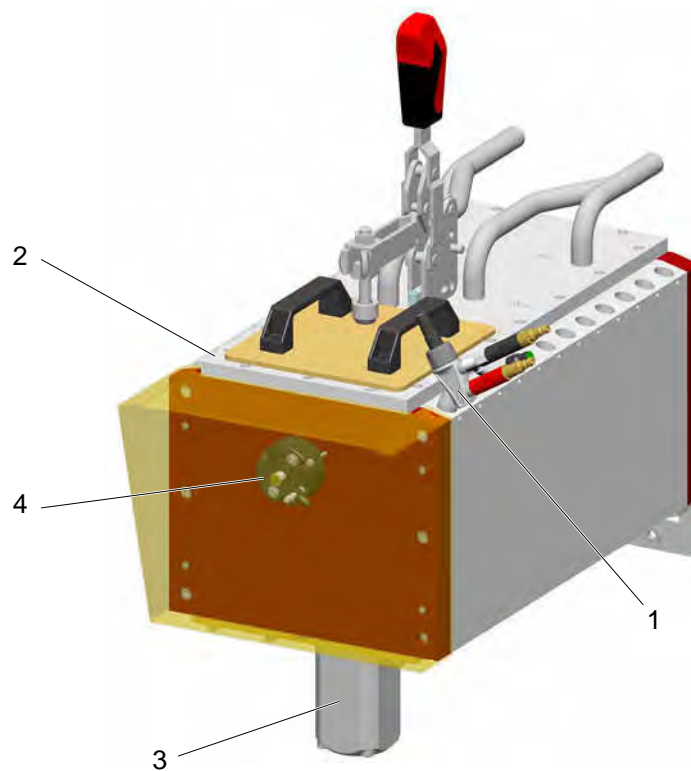


Fluidizing/suction unit – Ø 28 mm, complete	1005 332
1 Connector – NW5.0-1/8"	200 859
2 Elbow joint – 1/8"-1/8"	235 733
3 Flow restrictor – Ø 0.3 mm	338 303
4 Adapter nipple – 1/8"-1/8"	200 930
Fluidizing ring set – incl. pos. 5, 6, 7	720 002#
5 Fluidizing ring	
6 O-ring – Ø 14x1.5 mm	
7 O-ring – Ø 22.1x1.6 mm	
8 Foot piece	1005 327

Wearing part

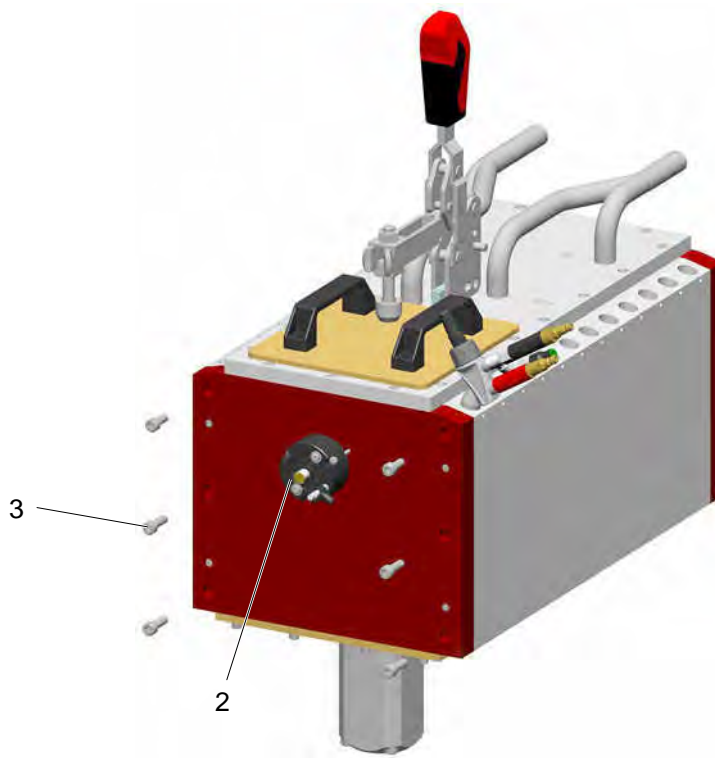
* Please indicate length

OptiSpeeder – complete



1	OptiFlow IG06-P injector – see corresponding operating manual	1007 779
2	OptiSpeeder cover – see corresponding spare parts list	
3	Pinch valve – DN32 G 1 1/4", complete	1007 648
4	Level sensor – see corresponding spare parts list	

OptiSpeeder

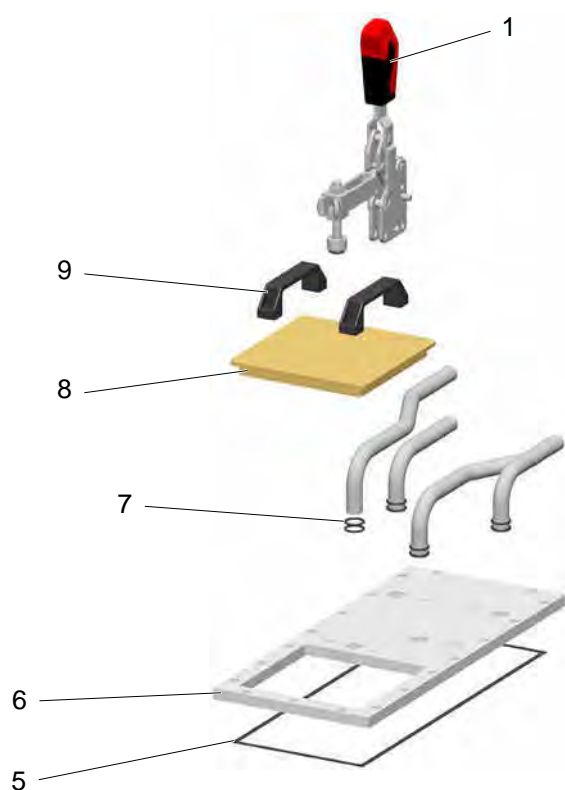


2 Level sensor – see corresponding spare parts list

3 Allen cylinder screw – M8x25 mm

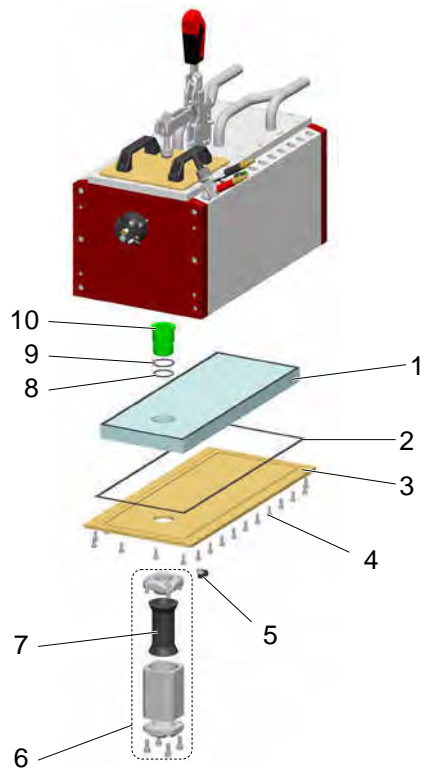
248 436

OptiSpeeder – Cover



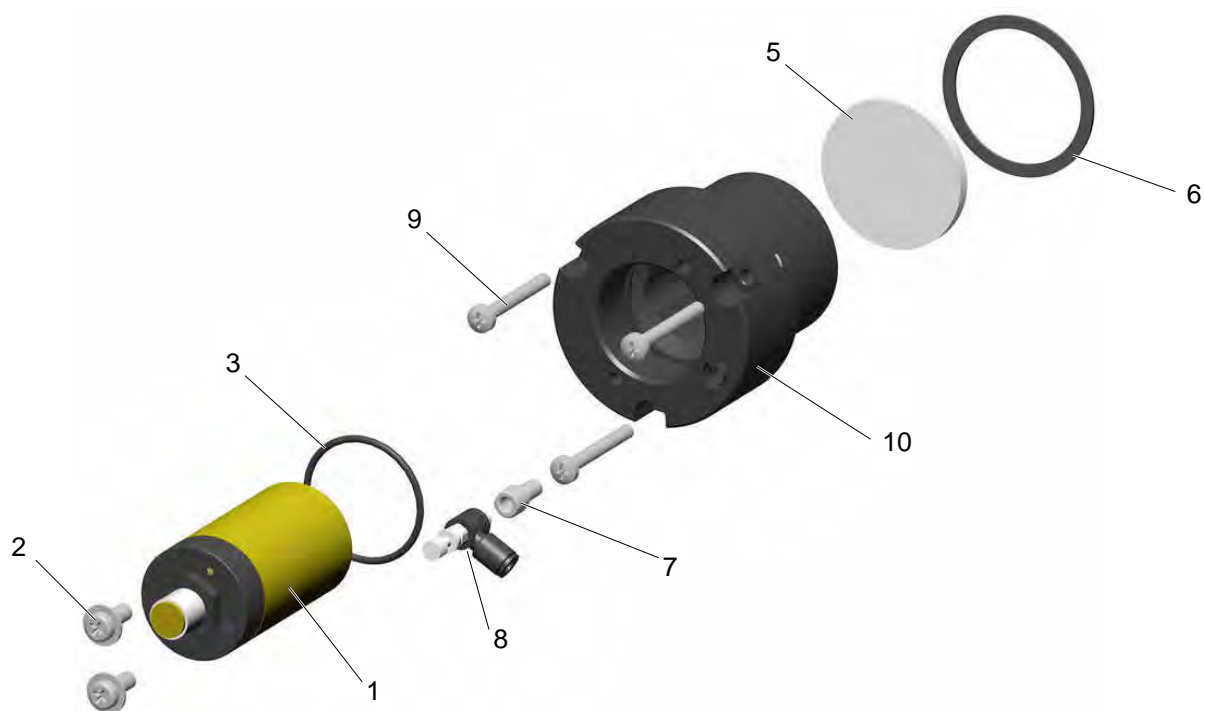
1	Toggle clamp – complete	1008 017
5	Gasket	1007 781
6	Cover	1007 924
7	O-ring – Ø 21x3 mm	214 981#
8	Cover	1007 927
8.1	O-ring for pos. 8 (not shown)	1008 063#
9	Grip	244 864
	# Wearing part	

OptiSpeeder – Fluidizing plate



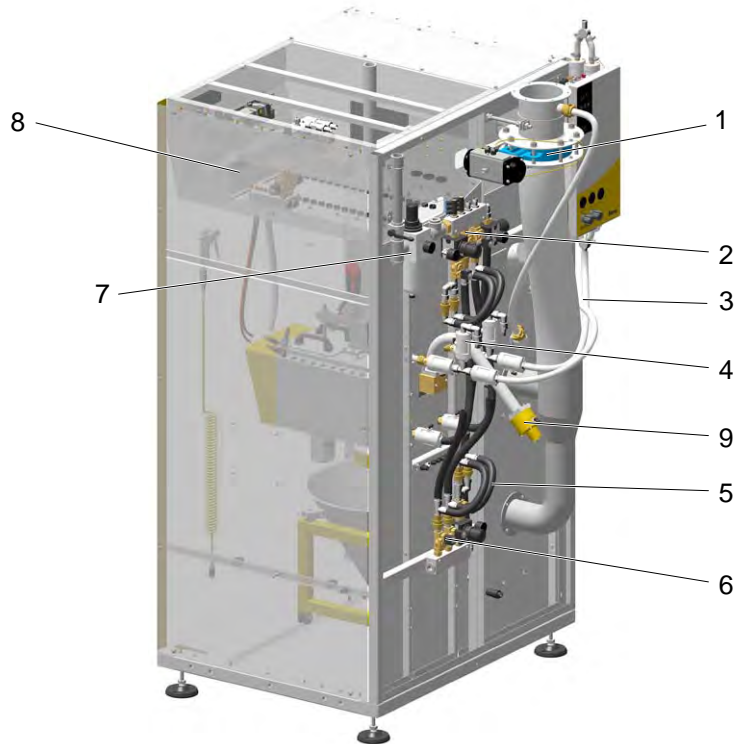
Bottom fluidizing plate 24P – set (incl. pos. 1, 4, 8, 9)	720 005
1 Bottom fluidizing plate 24P – complete	1007 783#
1.1 Bottom fluidizing plate 30P – complete	1008 316#
1.2 Bottom fluidizing plate 36P – complete	1008 413#
2 Gasket 24P	1007 831
2.1 Gasket 30P	1008 323
2.2 Gasket 36P	1008 416
3 Fastening plate	1007 786
4 Allen cylinder screw – M6x16 mm	
5 Elbow joint – 1/8"-Ø 8 mm	251 372
6 Pinch valve – DN32 G 1 1/4", complete	1007 648
7 Pinch valve hose – NW32	1007 647#
8 O-ring – Ø 33x3 mm	#
9 O-ring – Ø 40x3 mm	#
10 Connector	1007 571#
# Wearing part	

OptiSpeeder – Level sensor



Level sensor set (incl. pos. 1, 2, 3)	720 003
1 Level sensor – N.O., 10...65 VDC	
2 Cap screw – M5x12 mm	
3 O-ring – Ø 34x2 mm	
4 Cable – for pos. 1 (not shown)	259 420
Fluidizing plate set (incl. pos. 5, 6, 7, 8, 9)	720 004
5 Fluidizing plate – Ø 44x4 mm	#
6 Gasket – Ø 47.5x1 mm	#
7 Compressed air connector	
8 Throttle valve – Ø 4-M5x0.8 mm	
9 Cap screw – M4x35 mm	
10 Support	1005 644
# Wearing part	

OptiCenter – Pneumatics



1 Butterfly valve – see corresponding spare parts list

2 Manifold – see corresponding spare parts list

3 Powder hose – Ø 16/23 mm 1003 307*#

4 Pinch valve – see corresponding spare parts list

5 Compressed air hose – Ø 16.4/26.6 mm 105 155*

6 Pneumatic manifold 2 – see corresponding spare parts list

7 Main air supply – see corresponding spare parts list

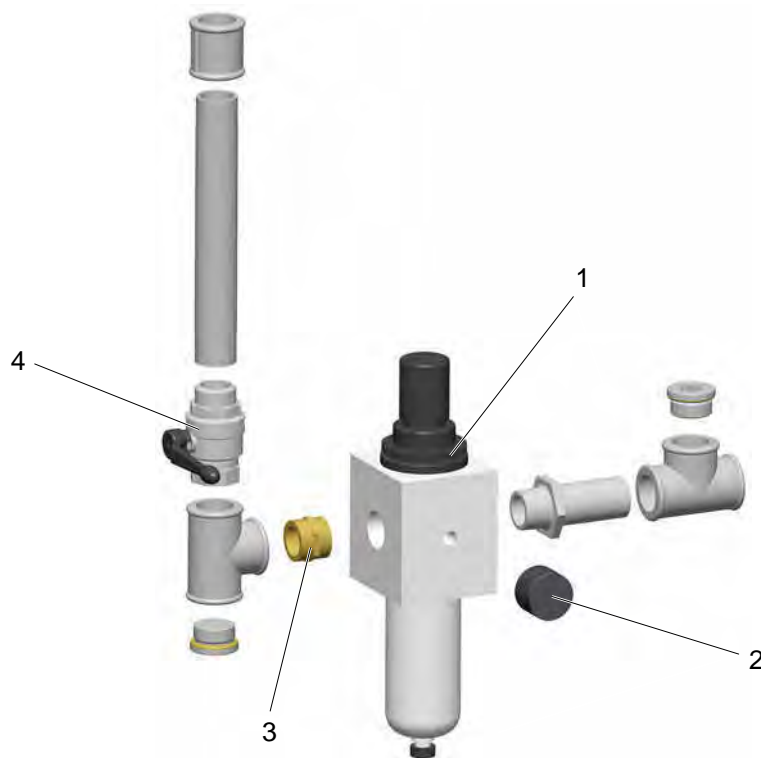
8 OptiCenter roof – see corresponding spare parts list

9 AirMover – NW40 mm, complete 1008 066

Wearing part

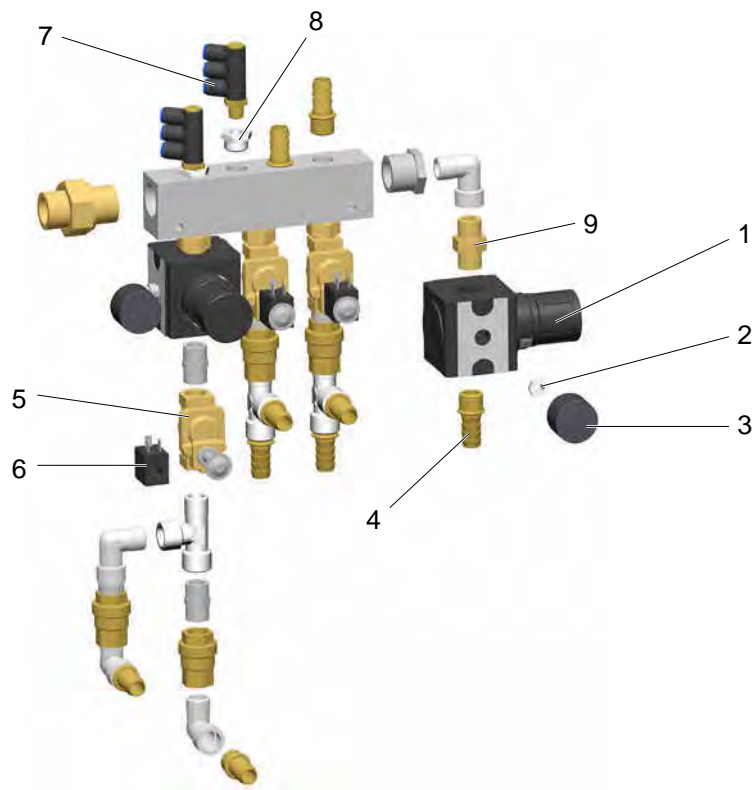
* Please indicate length

Main air supply



1	Pressure regulator/Filter unit – 0.5-8 bar, 1"	1006 547
2	Pressure gauge – 0-10 bar, 1/4"	1010 964
3	Double nipple – 1"-1"	1003 544
4	Ball valve – 1"-1"	1006 065

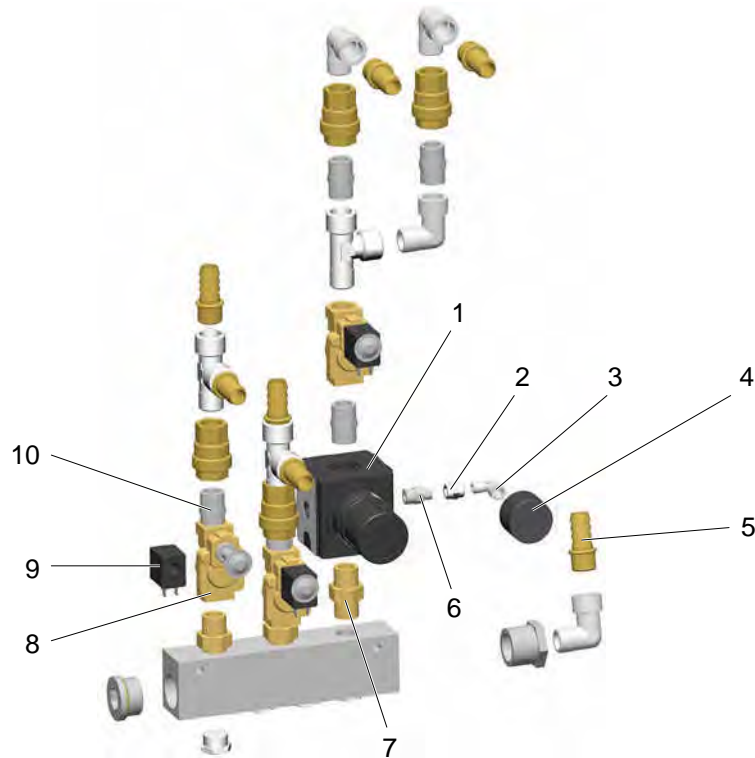
OptiSpeeder – Pneumatic manifold



1	Pressure regulator – 0.5-10 bar, 1/2"	259 187
2	Adapter nipple – 1/8i-1/4a	265 454
3	Pressure gauge – 0-10 bar, 1/8"	259 179
4	Hose connector – Ø 16-1/2"	259 268
5	Solenoid valve – 1/2", NW13.5 mm, without coil	1005 120
6	Valve coil – 24 VDC	1005 119#
7	Elbow joint – 1/4"-Ø 8/3 x 1 mm	1002 614
8	Adapter nipple – 1/4"-1/2"	253 995
9	Double nipple – 1/2"-1/2", divisible	243 582

Wearing part

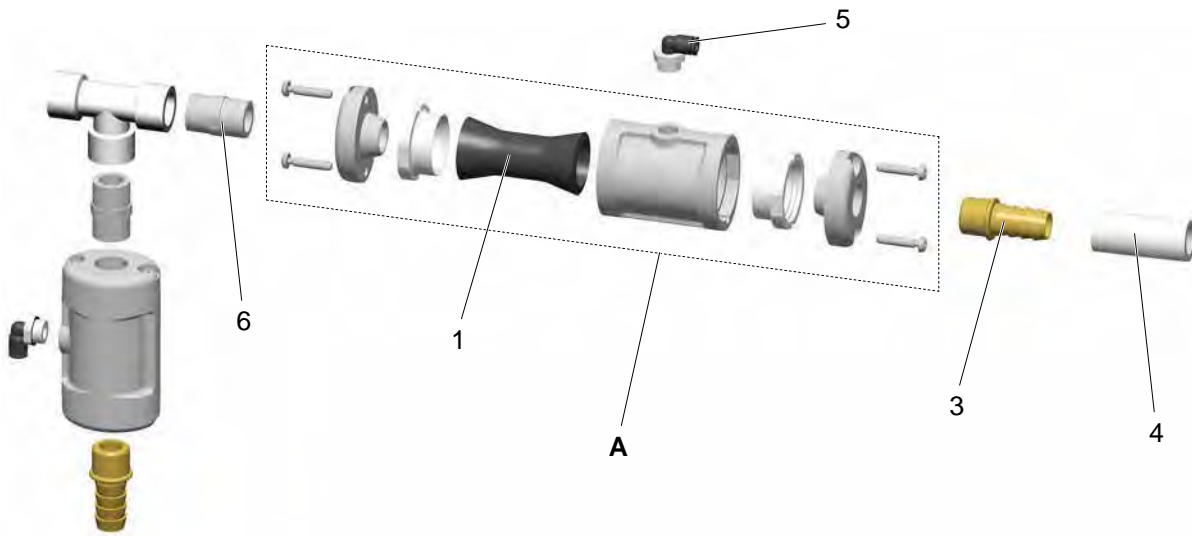
Pneumatic manifold Cleaning



1	Pressure regulator – 0.5-10 bar, 1/2"	259 187
2	Adapter – 1/8"-1/8"	259 551
3	Elbow joint – 1/8"-1/8"	237 604
4	Pressure gauge – 0-10 bar, 1/8"	259 179
5	Hose connector – Ø 16 mm-1/2"	259 268
6	Double nipple – 1/4"-1/8"	242 209
7	Double nipple – 1/2"-1/2", divisible	243 582
8	Solenoid valve – 1/2", NW13.5 mm, without coil	1005 120
9	Valve coil – 24 VDC	1005 119#
10	Double nipple – 1/2"-1/2"	243 540

Wearing part

Pinch valve NW15

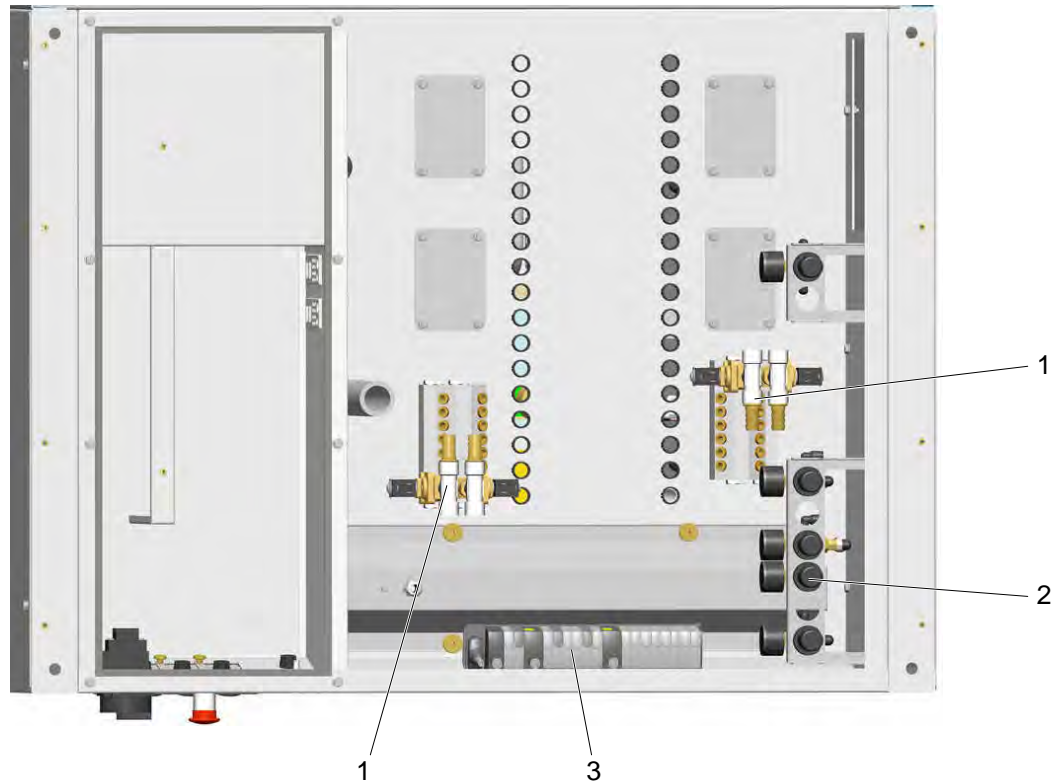


A	Pinch valve NW15 – complete	1006 255
1	Pinch valve sleeve NW15	1006 256#
3	Hose connector – Ø 16 mm-1/2"	259 268
4	Powder hose – Ø 16/23 mm	1003 307#*
5	Elbow joint – 1/4"-Ø 6 mm	265 691
6	Double nipple – 1/2"-1/2"	243 540

Wearing part

* Please indicate length

OptiCenter – Roof

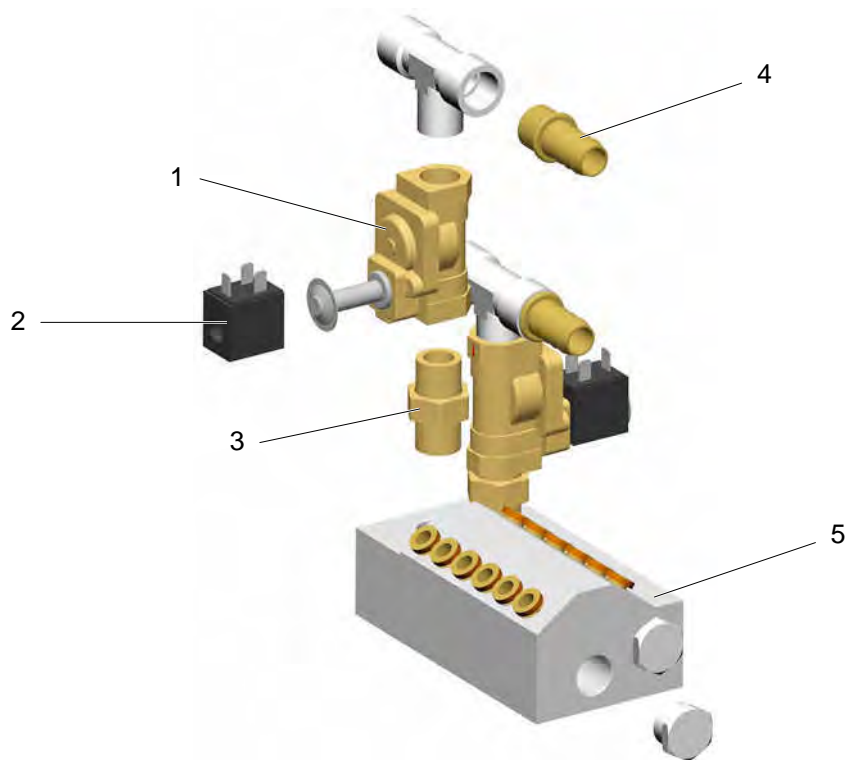


-
- 1 Shuttle valves pool – see corresponding spare parts list

 - 2 Pressure regulators pool – see corresponding spare parts list

 - 3 Valves pool – see corresponding spare parts list

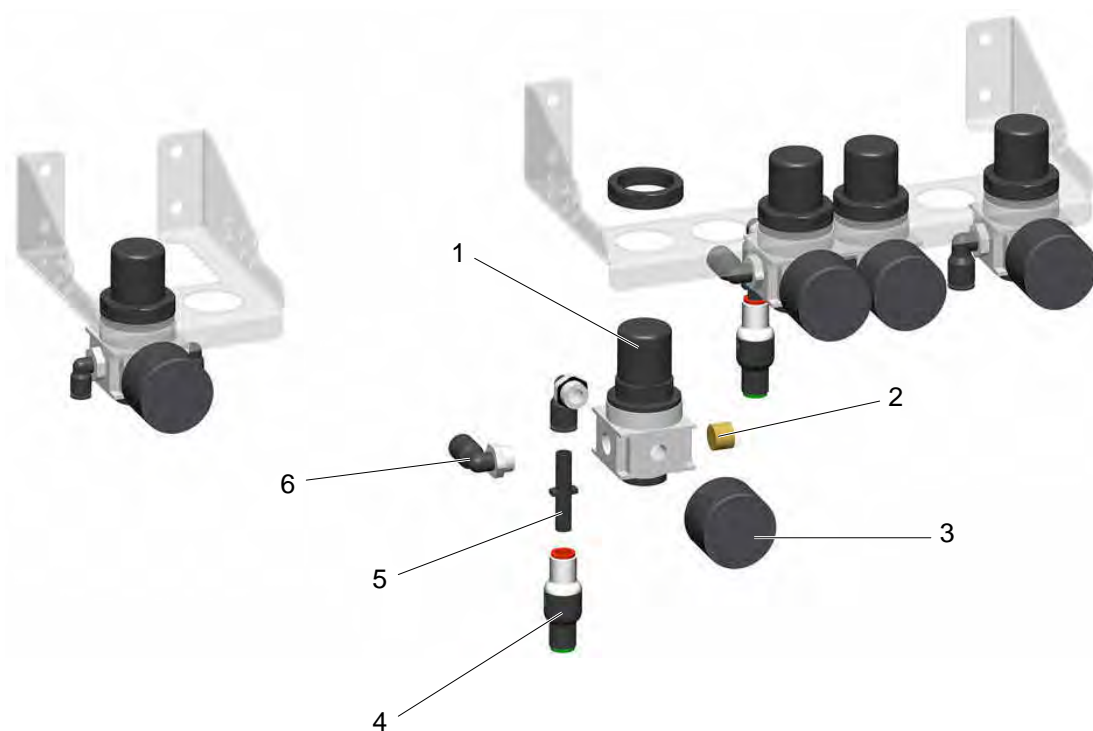
Shuttle valves pool



1	Solenoid valve – 1/2", NW13.5 mm, without coil	1005 120
2	Valve coil – 24 VDC	1005 119#
3	Double nipple – 1/2"-1/2", divisible	243 582
4	Hose connector – Ø 16-1/2"	259 268
5	Block	1007 388

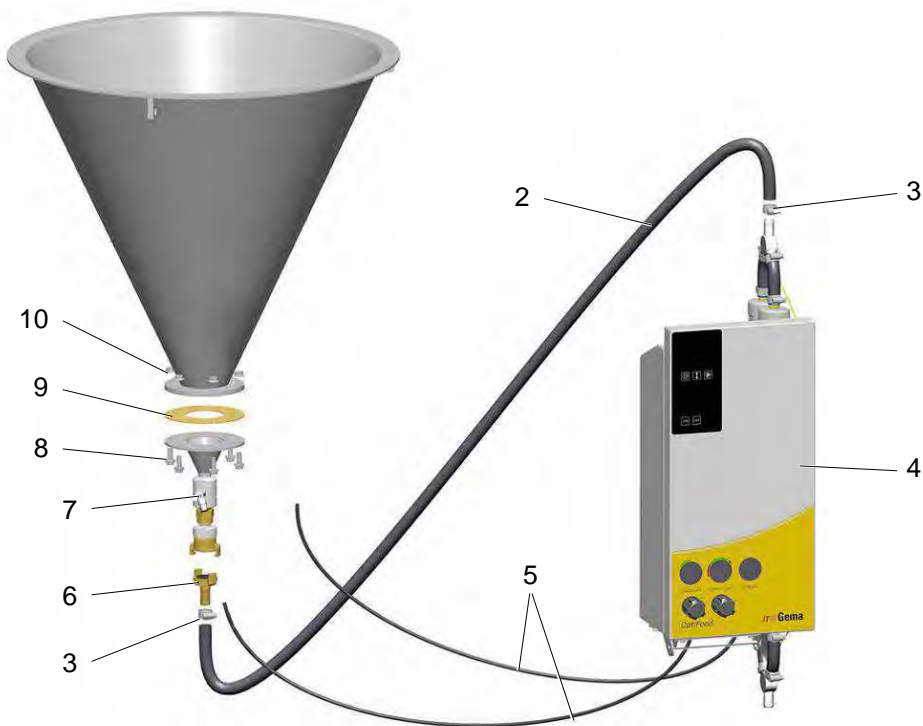
Wearing part

Pressure regulators pool



1	Pressure regulator – 0.5-6 bar, 1/4"	264 342
2	Plug cap – 1/4"	258 695
3	Pressure gauge – 0-10 bar, 1/8"	259 179
4	Check valve – Ø 8-Ø 8 mm	1005 575
5	Double connecting nipple – Ø 8 mm	229 326
6	Elbow joint – 1/4"-Ø 8 mm	254 029

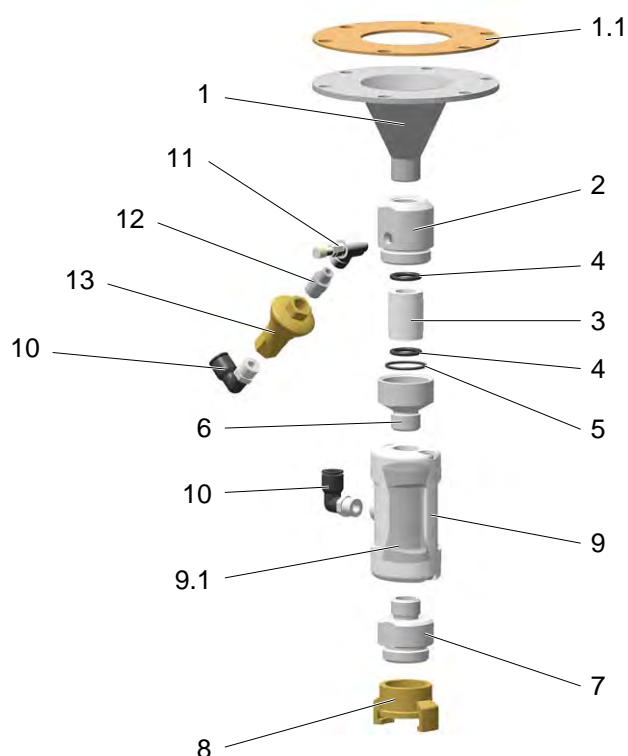
Monocyclone – Powder transport



2	Powder hose – Ø 16/23 mm	1003 307#*
3	Hose clamp – 17-25 mm	223 085
4	OptiFeed PP06 Powder pump – see corresponding operating manual	
5	Plastic tube – Ø 6/4 mm	103 144*
6	GEKA coupling with grommet – Ø 16 mm	1003 872
7	Fluidizing unit – complete, see corresponding spare parts list	1005 507#
8	Allen cylinder screw – M8x20 mm	265 241
9	Gasket	395 439
10	Hexagon shakeproof nut – M8	244 449

Wearing part

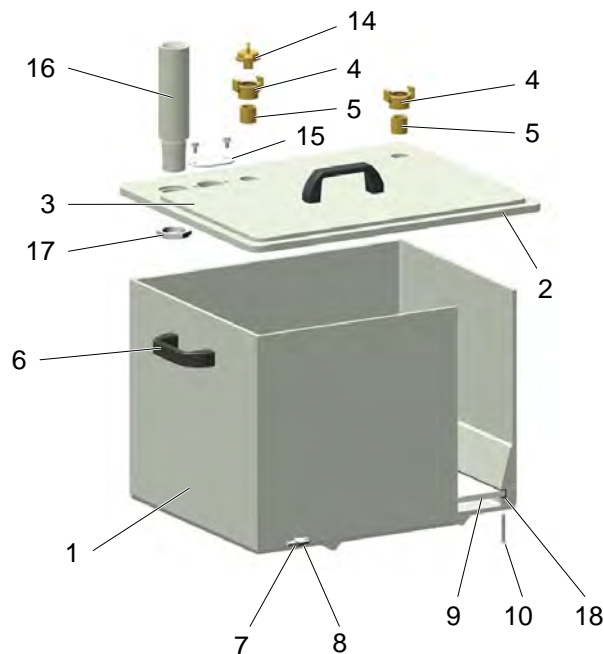
Monocyclone – Powder transport connection



Powder transport connection – complete (pos. 1-13, incl. fixing screws)	1008 846
1 Funnel piece	1005 502
1.1 Gasket for pos. 1	395 439#
Fluidizing unit – complete (pos. 2-6)	1005 507
2 Connector	1005 504
Fluidizing tube set (incl. pos. 3, 4, 5)	720 006
3 Fluidizing tube	#
4 O-ring – Ø 17x3 mm	#
5 O-ring – Ø 26x2 mm	#
6 Locking piece	1005 506
7 Connecting piece	1005 503
8 GEKA coupling – 1"-IG	1000 854
9 Pinch valve DN15 – complete, incl. pos. 9.1	1006 255
9.1 Pinch valve sleeve NW15	1006 256#
10 Elbow joint – 1/4"-Ø 8 mm	224 359
11 Throttle valve – 1/8"-1/8"	1002 127
12 Double nipple – 1/4"-1/8"	242 209
13 Inline regulator – 3 bar, 1/4"	1005 517

Wearing part

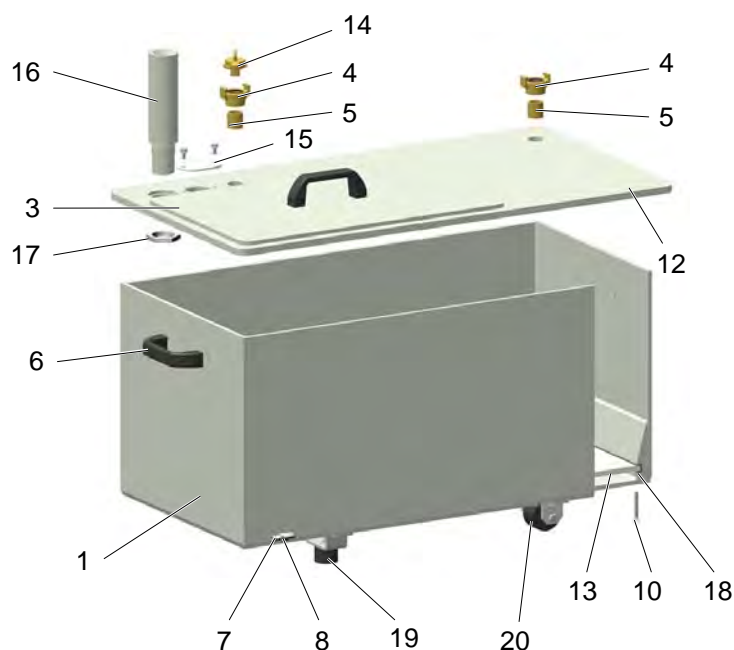
Powder hopper PH60-OC



Powder hopper PH60-OC – complete (pos. 1-19)	1008 171
1 Powder hopper PH60-OC	1008 313
2 Cover PH60-OC	1008 194
3 Container cover – complete	1011 642
4 GEKA coupling – 3/4"	1002 551
5 Double nipple – 3/4"-3/4"	228 028
6 Grip	1006 013
7 Connector – NW5-1/8"	237 272
8 Elbow joint – 1/8"-1/8"	237 604
9 Fluidizing plate PH60-OC	1006 012
10 Countersunk Allen screw – M6x50 mm	1002 954
14 GEKA blind coupling	1002 405
15 Level sensor cover	1007 178
16 Cover bushing	1011 499
17 Locknut – Ø 40x28xM8 mm	1008 285
18 Rubber profile	1007 172*
19 Hose for OptiSpeeder emptying – Ø 40 mm (not shown)	100 048*
Blind cover PH60-OC (not shown)	373 907

* Please indicate length

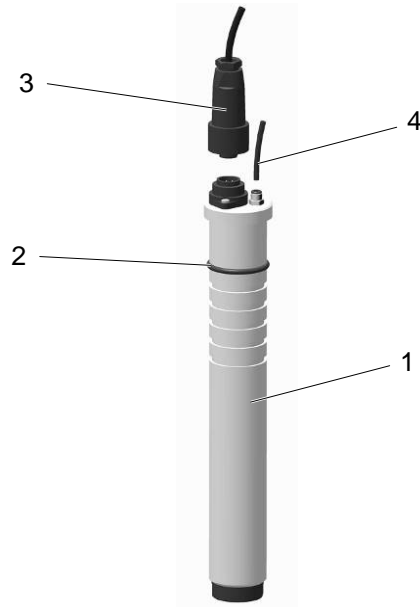
Powder hopper PH100-OC



Powder hopper PH100-OC – complete (pos. 1-21)	1008 303
1 Powder hopper PH100-OC	1008 315
3 Container cover – complete	1011 642
4 GEKA coupling – 3/4"	1002 551
5 Double nipple – 3/4"-3/4"	228 028
6 Grip	1006 013
7 Connector – NW5-1/8"	237 272
8 Elbow joint – 1/8"-1/8"	237 604
10 Countersunk Allen screw – M6x50 mm	1002 954
12 Cover PH100-OC	1011 497
13 Fluidizing plate PH100-OC	1006 017
14 GEKA blind coupling	1002 405
15 Level sensor cover	1007 178
16 Cover bushing	1011 499
17 Locknut – Ø 40x28xM8 mm	1008 285
18 Rubber profile	1007 172*
19 Rubber buffer – M40x1.5 mm	248 592
20 Roller	1009 141
21 Hose for OptiSpeeder emptying – Ø 40 mm (not shown)	100 048*
Blind cover PH100-OC (not shown)	362 719

* Please indicate length

LC01 Level sensor

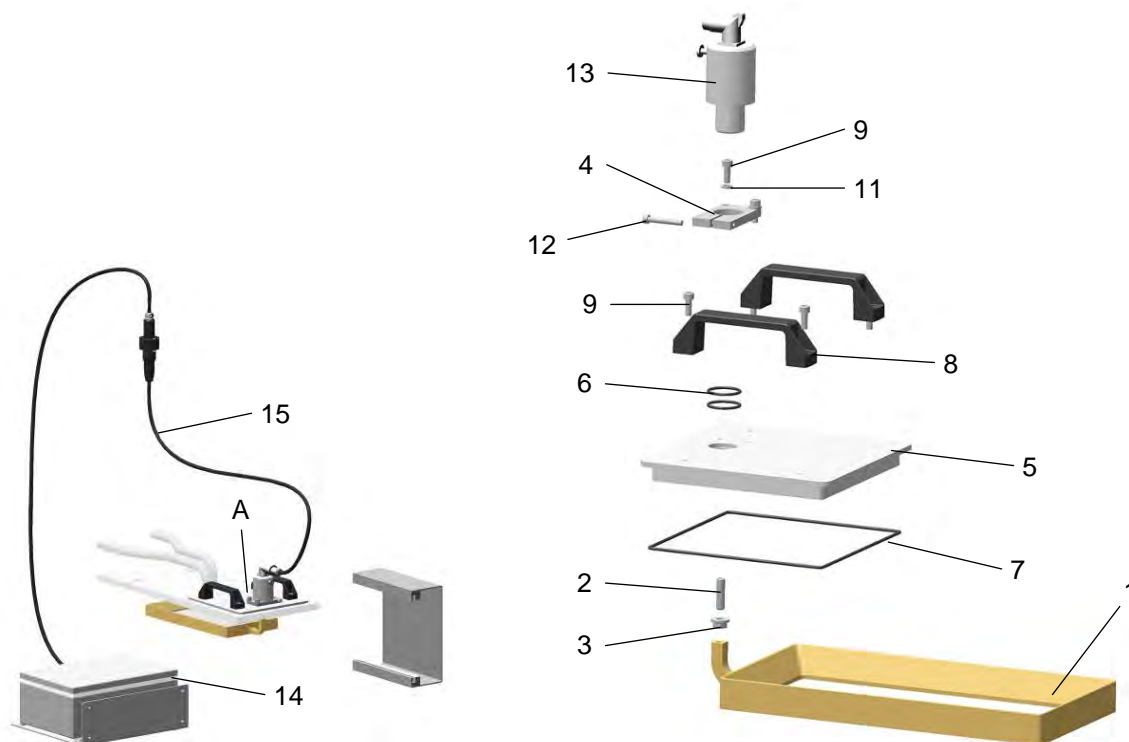


1	LC01 Level sensor – complete (incl. pos. 2)	1006 089
2	O-ring – Ø 38 x 4 mm	239 151#
3	Connecting cable – complete	371 696
4	Plastic tube – Ø 4/Ø 2 mm	104 051*

Wearing part

* Please indicate length

US06 Ultrasonic sieve



A US06 Ultrasonic sieve – complete (pos. 1-13)	Indicate project no.
1 Sieve 140 µm – complete (pos. 1-3)	1009 892#
Sieve 200 µm – complete (pos. 1-3)	1009 893#
Sieve 250 µm – complete (pos. 1-3)	1009 894#
Sieve 300 µm – complete (pos. 1-3)	1009 895#
2 Allen grub screw – M8x35 mm	
3 Nut with flange – M8	
4 Terminal	1007 871
5 Cover	1007 870
6 O-ring – Ø 28 x 2.5 mm	263 842#
7 O-ring – Ø 219.5 x 3 mm	1008 063#
8 Grip	244 864
9 Allen cylinder screw – M6x16 mm	216 410
11 Shake proof washer – M6	216 054
12 Allen cylinder screw – M5x35 mm	1008 597
13 Converter	1007 869
14 Ultrasonic generator – 100 W	1008 178
15 Cable with coupling	1008 847
Thread sealant – ERGO no. 4202	220 507
# Wearing part	